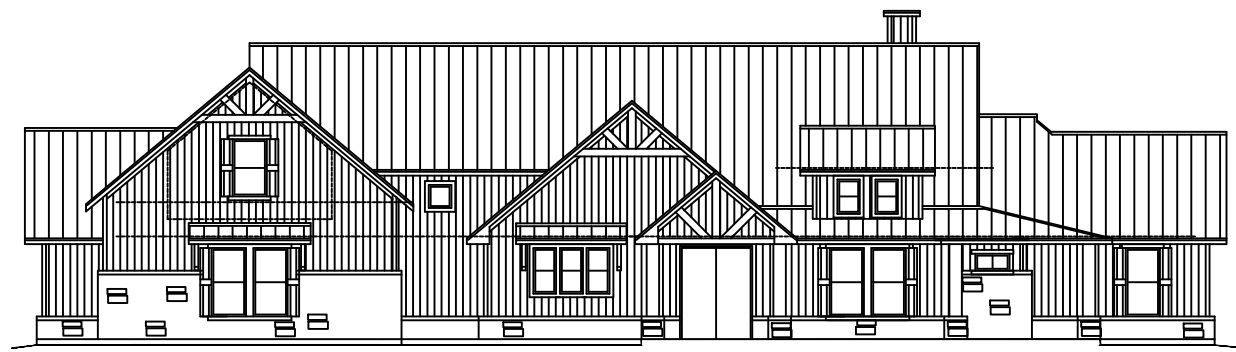


FLOOR PLAN

SQUARE FOOTAGE CALCULATIONS

FIRST FLOOR - 3935 S.F.
SECOND FLOOR - 402 S.F.
TOTAL LIVING S.F. - 4337 S.F.
TOTAL SLAB - 5943 S.F.



FRONT ELEVATION
SCALE 1/4" = 1'-0"