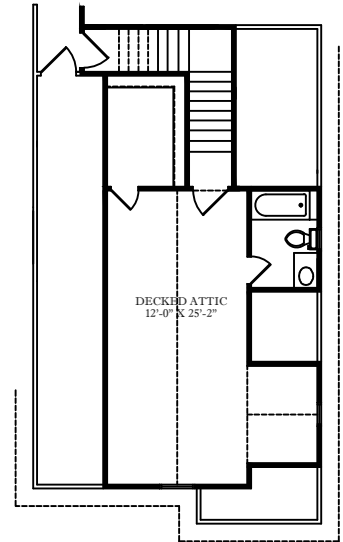


FLOOR PLAN

SCALE: 1/4" = 1'-0"

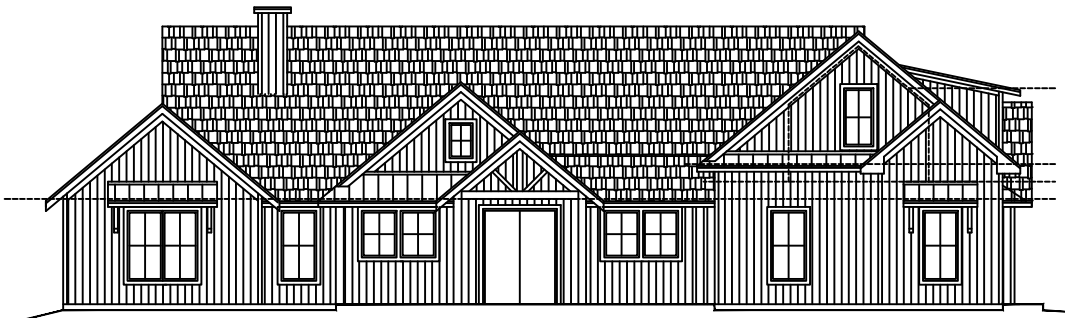


DECKED ATTIC

SQUARE FOOTAGE CALCULATIONS

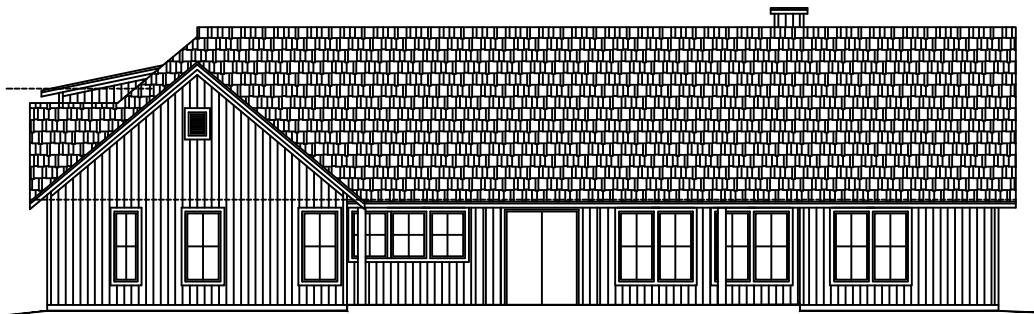
FIRST FLOOR LIVING S.F. - 2468 S.F.  
 BONUS ROOM APPROX 601 S.F.  
 TOTAL WITH BONUS 3069 L.S.F.

TOTAL SLAB - 4101 S.F.



FRONT ELEVATION

SCALE: 1/4" = 1'-0"



REAR ELEVATION

SCALE: 1/4" = 1'-0"