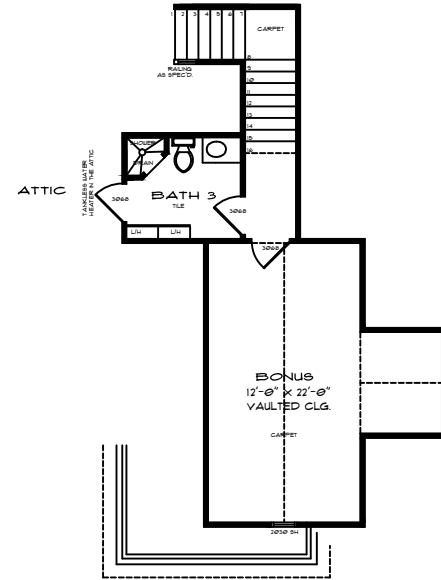


FLOOR PLAN



BONUS FLOOR PLAN



FRONT ELEVATION

SQUARE FOOTAGE CALCULATIONS

MAIN LIVING - 2375 S.F.
BONUS ROOM - 450 S.F.
TOTAL LIVING S.F. - 2775 S.F.
TOTAL SLAB - 3687 S.F.