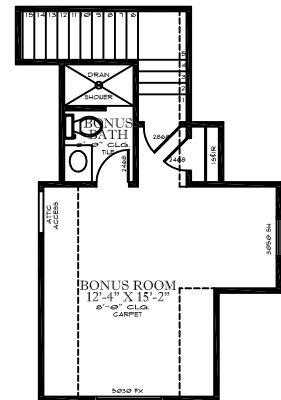


FLOOR PLAN



OPTIONAL BONUS



FRONT ELEVATION

SQUARE FOOTAGE CALCULATIONS

FIRST FLOOR - 2374 S.F.

BONUS ROOM - 318 S.F.

TOTAL LIVING S.F. - 2692 S.F.

TOTAL SLAB - 3633 S.F.