

## SQUARE FOOTAGE

TOTAL LIVING: 1268 s.f.

Front Porch: 290 s.f.

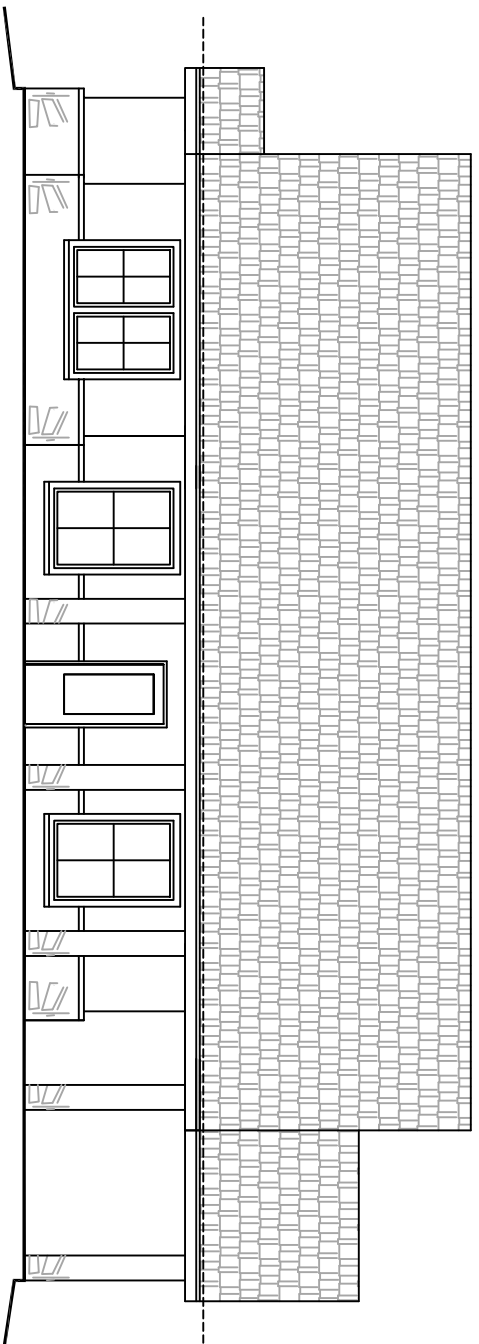
Carport: 376 s.f.

Masonry Lug: 82 s.f.

TOTAL SLAB: 2016 s.f.

## FLOOR PLAN

NT.S.



## FRONT ELEVATION

NT.S.